

Out reach Out doors: Geocaching for Engagement



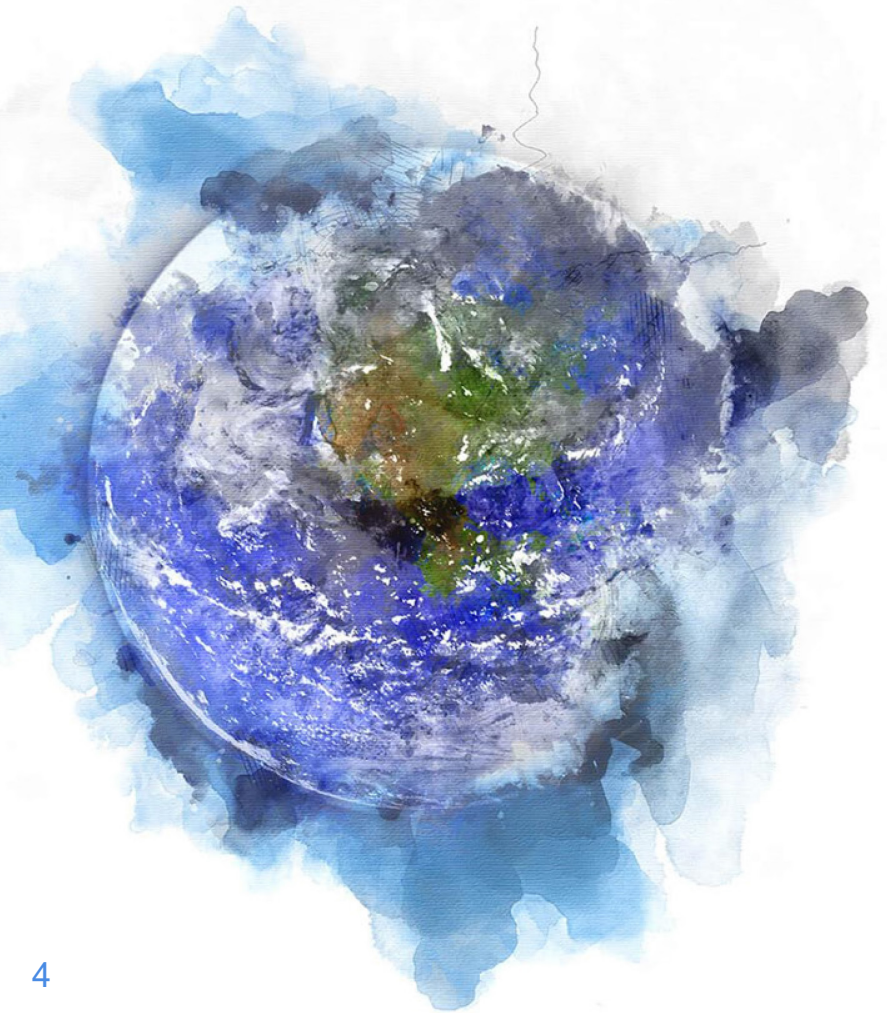
Southern California Instruction Librarians
SCIL Works
January 28, 2022

Laura Wimberley, PhD, MLIS
Assessment Librarian &
Liaison to Geography
California State University
Northridge



The Dilemma

How do we engage
students safely during the
pandemic?



The Prompt

GIS day

Geographic Information
System (GIS) Day

Annually on the third
Wednesday in November



The Solution

Geocaching

A global interactive
treasure hunt

Step 1

Make Caches

Kits available from
geocaching.com

or use repurposed
items

Include library swag

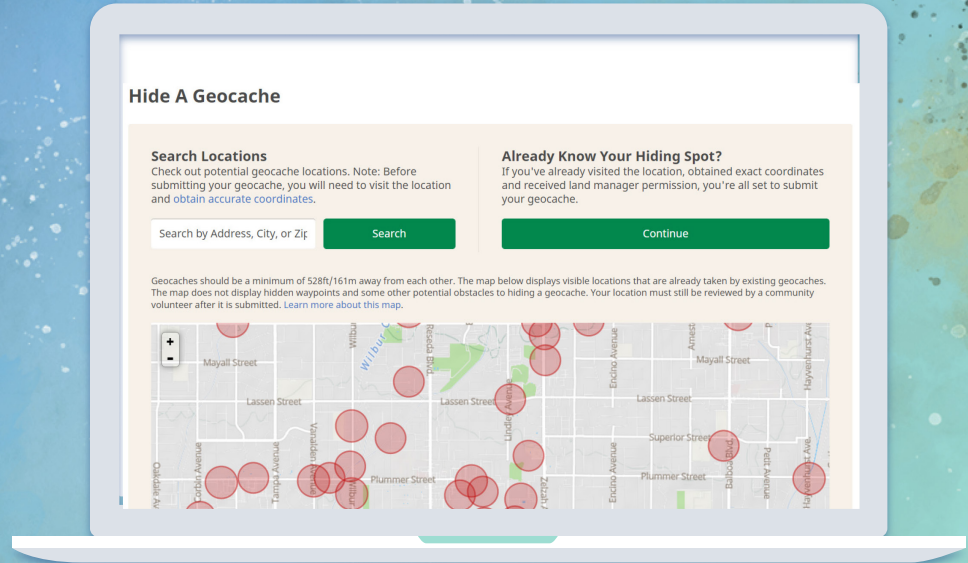


Step 2

Hide Caches

Use your phone to
identify GIS
coordinates for
hiding places

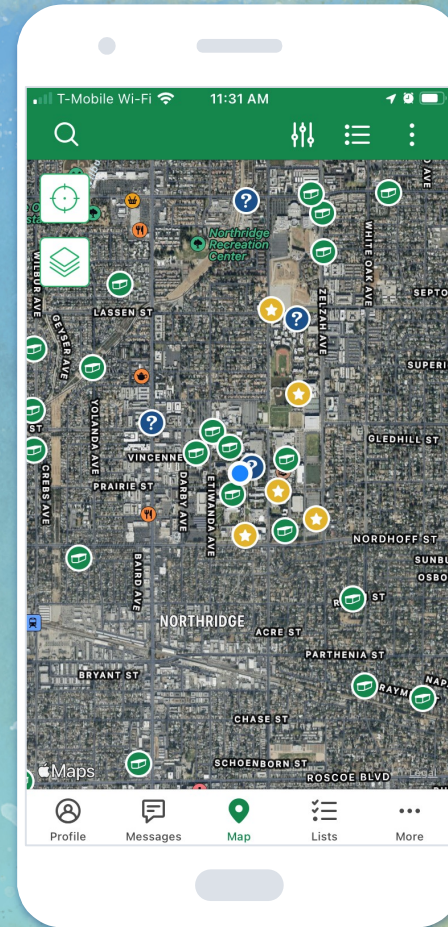
Use a laptop to record
your caches



Step 3

Find Caches

Participants create an account, then use their mobile devices to locate the caches

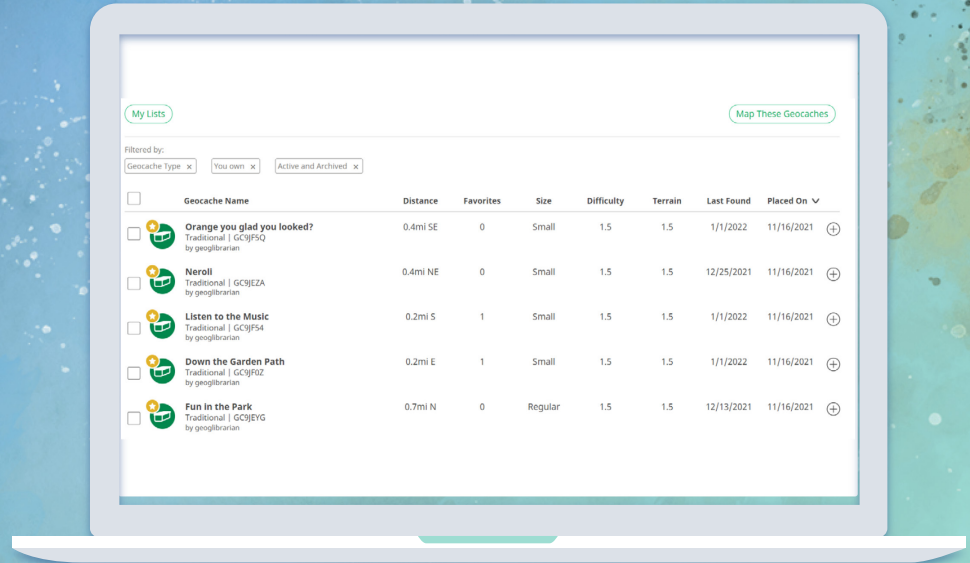


Step 4

Track Caches

Message with players

Assess participation





Challenges Faced

- Marketing
- Existing geocaches
- No longer existing geocaches
- Balance between student and community engagement




Limits and Drawbacks to Geocaching

Accessibility

Geocaching is difficult to impossible for people with vision impairments and/or mobility impairments.

Maintenance

Caches should be checked regularly to make sure they're still in place.



Thank you for your time and attention!

Questions?

laura.wimberley@csun.edu

geoglirarian on [geocaching.com](https://www.geocaching.com)